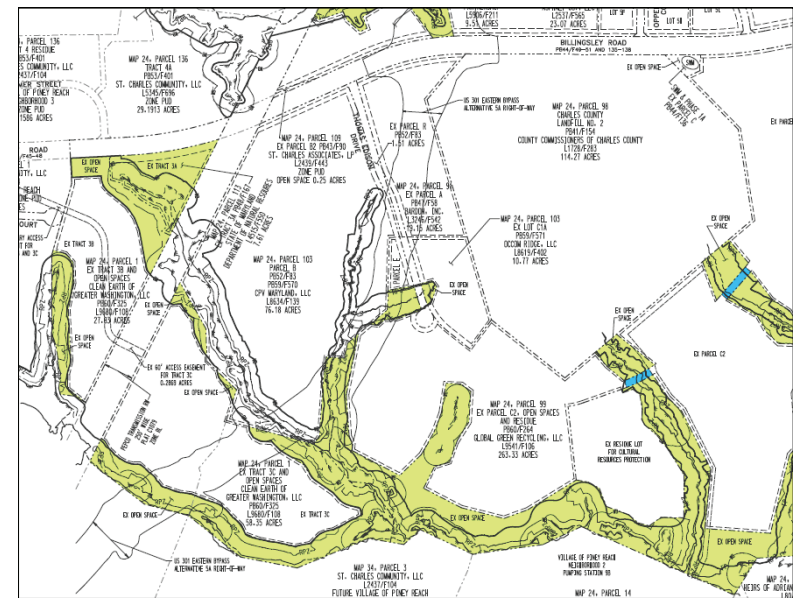
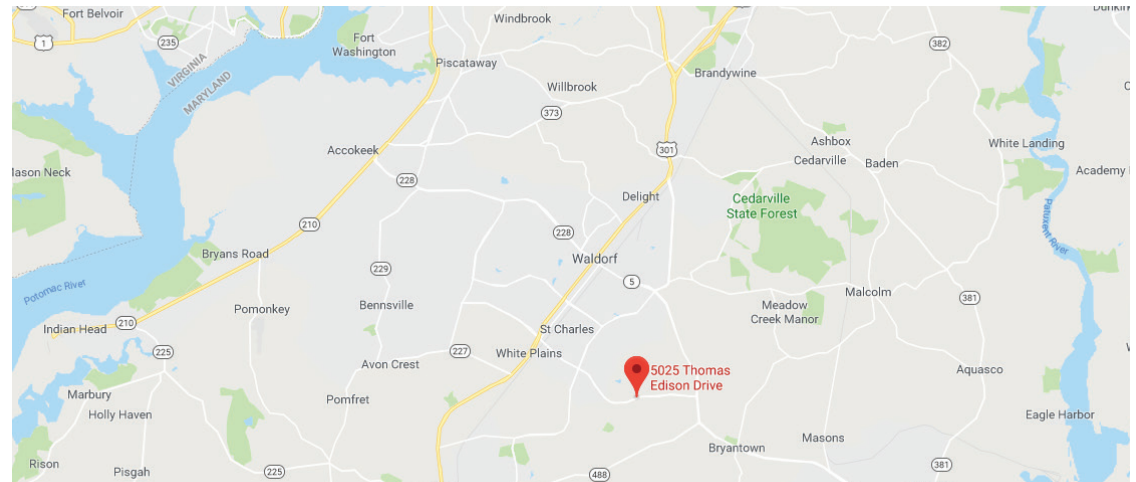
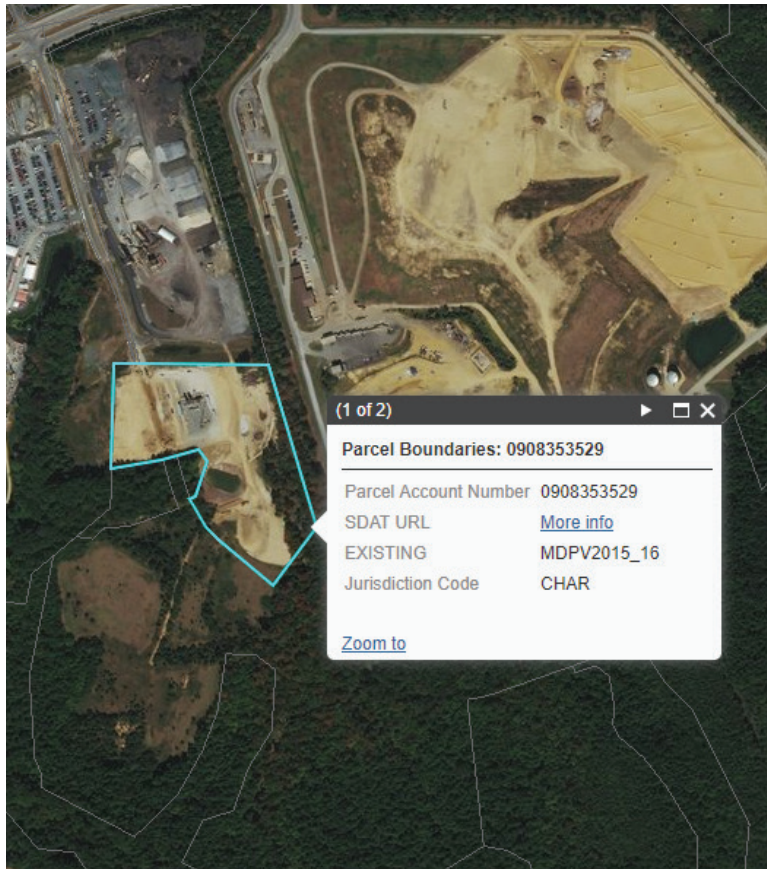


FOR SALE OR LEASE



5025 THOMAS EDISON DRIVE, WALDORF, MD 20601

5025 THOMAS EDISON DRIVE, WALDORF, MD 20601



PROPERTY FEATURES

- 10.77 AC
- 9+/- usable acres
- Can be split up into 3 smaller lots
- PUD Zoning – Zoning approvals done by PUD committee
- Leveled and cleared, public utilities at site
- Adjacent to Charles County Landfill

CONTACT

Kyle Murray

Phone: 301-932-5335

Email: kmurray@ChaneyEnterprises.com

CHANEY
ENTERPRISES